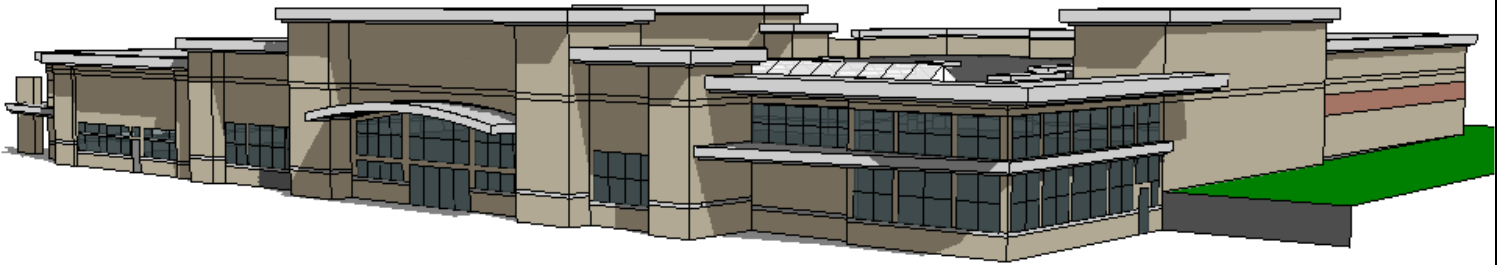


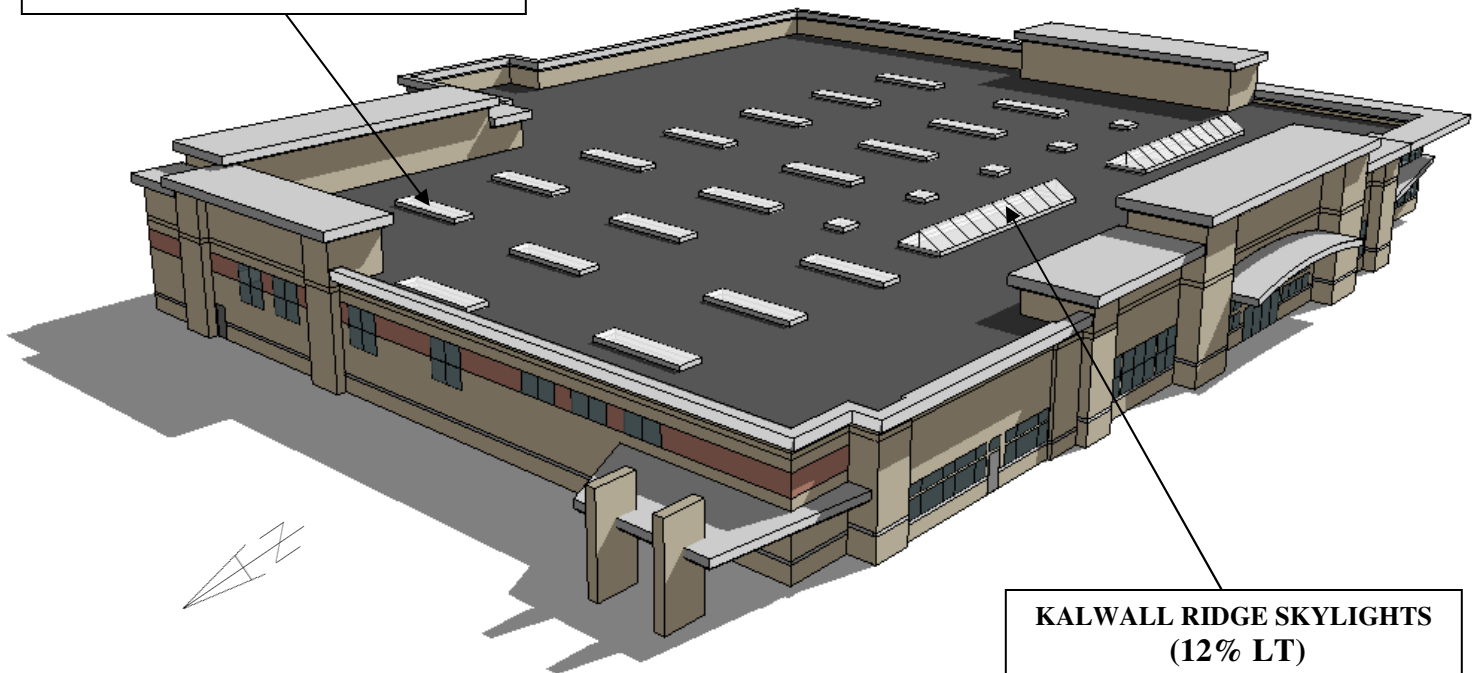
DAYLIGHT MODEL EXTERIOR BUILDING VIEW

Project Name:	Grocery Store
Project Location:	USA (Midwest)
Room Description:	Grocery Store
Daylight Area:	250'-0" x 150'-0"



SOUTHWEST ELEVATION

**KALWALL STANDARD SKYLIGHTS
(20% LT)**



**KALWALL RIDGE SKYLIGHTS
(12% LT)**

AERIAL VIEW

*Daylight simulations are based on weather data supplied by the US Department of Energy.
No warranty expressed or implied by Kalwall Corporation*

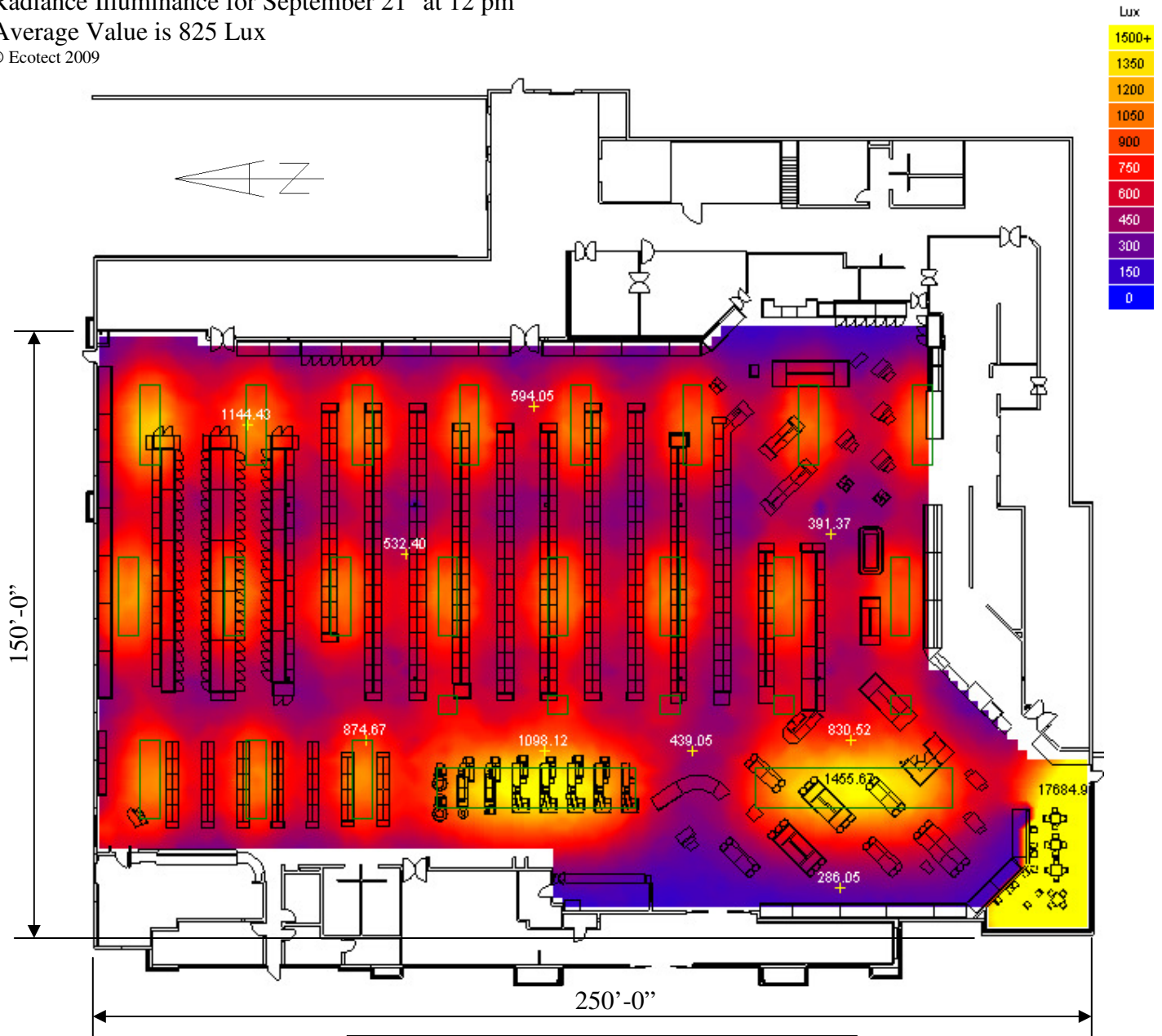
DAYLIGHT MODEL RESULTS

Project Name: Grocery Store	Sky Condition: Sunny
Project Location: USA (Midwest)	Weather City Data: USA (Midwest)
Room Description: Grocery Store	Model Date: September 21 st
Daylight Size: 250'-0" x 150'-0"	Model Time: 12:00 PM
Kalwall Application: Standard Skylights & Ridge-Roof Skylights	Kalwall Transmittance: 12%; 20%
Kalwall Size(s): (19) 5'-0" x 20'-0"; (5) 5'-0" x 5'-0"; (2) 50'-0" x 10'-0" [flat]	Wall Reflectance: Off White
Glass Application: Windows	Ceiling Reflectance: Off White
Glass Sizes(s): Varies	Floor Reflectance: Off White
Glass Transmittance: 35%	Daylight Autonomy: N/A

Radiance Illuminance for September 21st at 12 pm

Average Value is 825 Lux

© Ecotect 2009



Illuminance for September 21st at 12 pm
10.76 Lux = 1 fc. Task height is 3'-0"

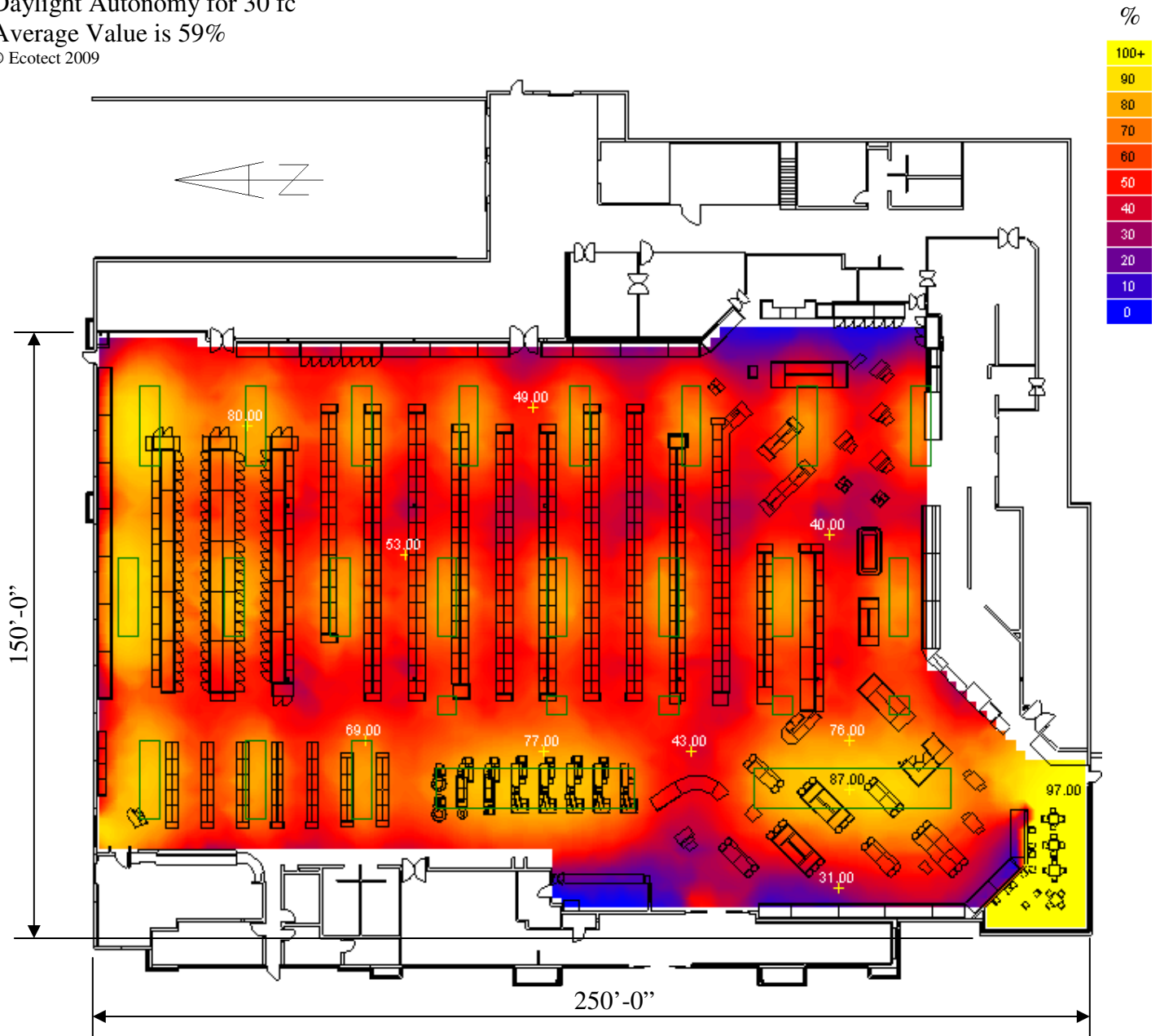
DAYLIGHT MODEL RESULTS

Project Name: Grocery Store	Sky Condition: Yearly Average
Project Location: USA (Midwest)	Weather City Data: USA (Midwest)
Room Description: Grocery Store	Model Date: Full Year
Daylight Size: 250'-0" x 150'-0"	Model Time: 9:00 AM – 5:00 PM
Kalwall Application: Standard Skylights & Ridge-Roof Skylights	Kalwall Transmittance: 12%; 20%
Kalwall Size(s): (19) 5'-0" x 20'-0"; (5) 5'-0" x 5'-0"; (2) 50'-0" x 10'-0" [flat]	Wall Reflectance: Off White
Glass Application: Windows	Ceiling Reflectance: Off White
Glass Sizes(s): Varies	Floor Reflectance: Off White
Glass Transmittance: 35%	Daylight Autonomy: 30 fc

Daylight Autonomy for 30 fc

Average Value is 59%

© Ecotect 2009



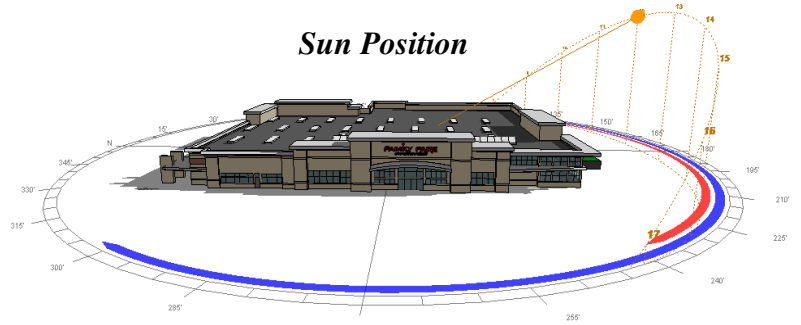
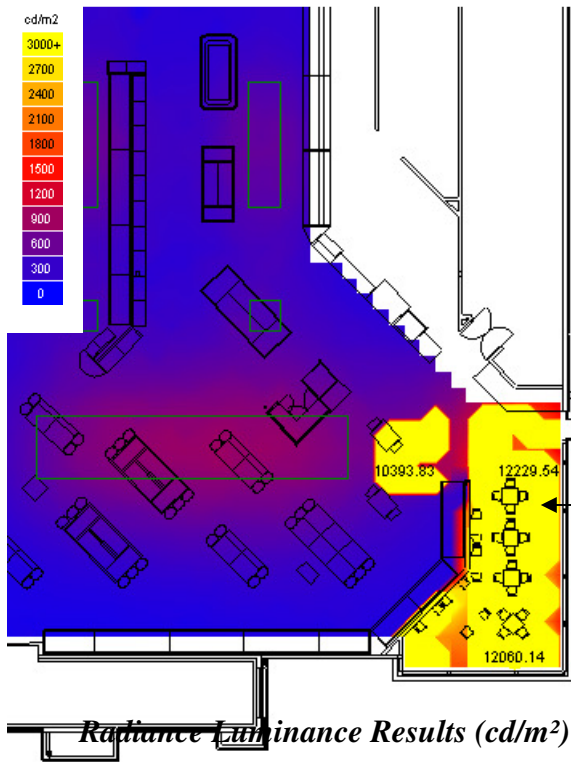
Daylight Autonomy predicts the percentage of daylight hours where the illuminance meets or exceeds the desired task illuminance level. For this chart, 30 fc was chosen as the desired light level for the space. Task height is 3'-0" above the floor.

DAYLIGHT MODEL RESULTS

GLARE PATTERN ANALYSIS

Analysis Performed at:

12:00 PM on November 17th



Glare is measured in luminance (cd/m²). Any reading (of direct sunlight) that is 3000 cd/m² or higher may be considered glare, and is said to cause discomfort & safety concerns. Glare caused by the glass windows may be found in the dining area throughout the day, year-round. It also may be found in part of the produce department during the afternoon hours, particularly during the winter months.

INTERIOR LUMINANCE RENDERING

*Produce Dept./Dining Area
(Looking Southwest)*



DAYLIGHT MODEL RESULTS

The following interior renderings are for a clear day at 12 pm on the equinox (September 21st)
Only daylight contribution from Kalwall ridge-roof skylights is shown.

