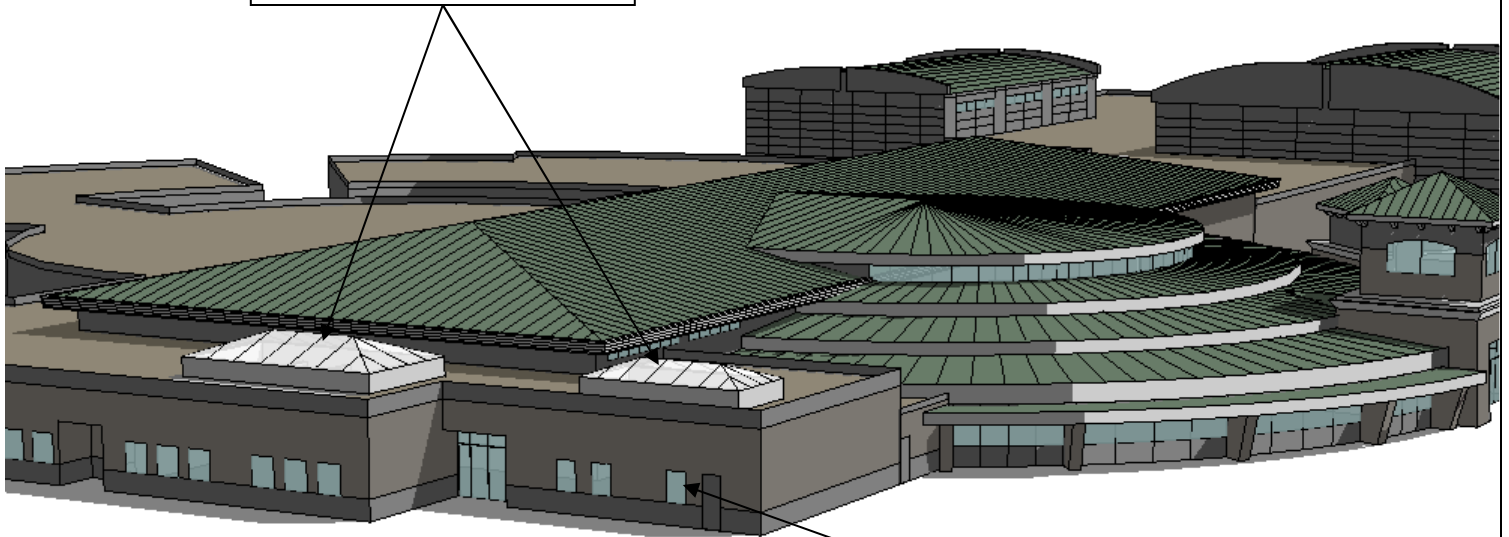


# DAYLIGHT MODEL EXTERIOR BUILDING VIEW

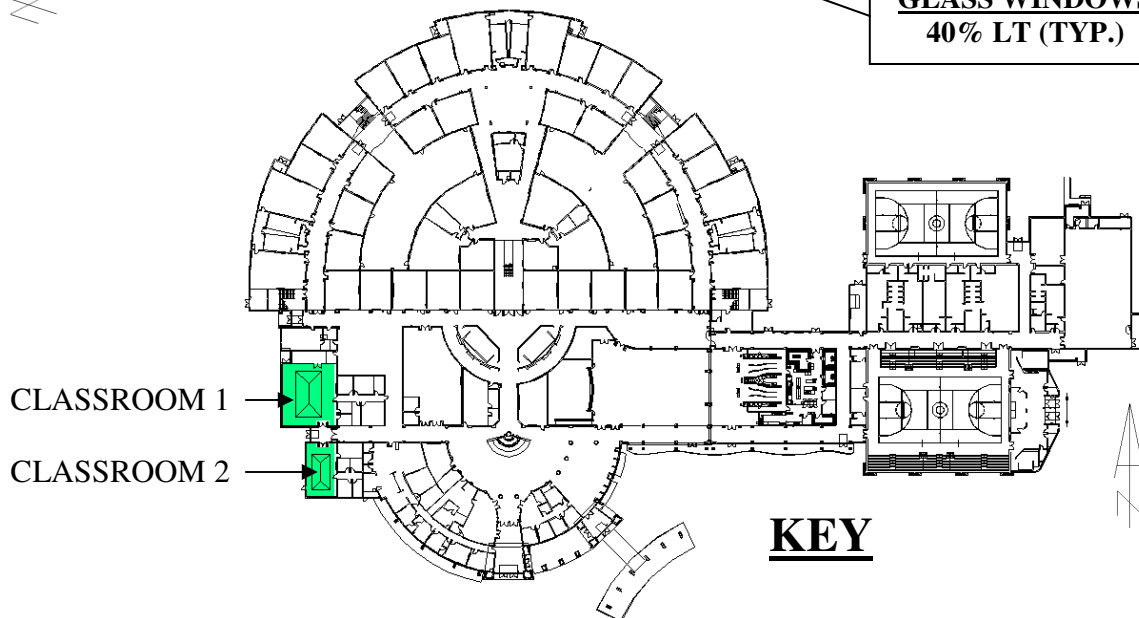
Project Name:	School
Project Location:	USA (South)
Room Description:	Classrooms
Daylight Area:	42'-9" x 49'-4"; 24'-0" x 43'-0"

**KALWALL SKYLIGHTS**  
As-Submitted: 20% LT

**SOUTHWEST ELEVATION**



**GLASS WINDOWS**  
40% LT (TYP.)



*Daylight simulations are based on weather data supplied by the US Department of Energy.  
No warranty expressed or implied by Kalwall Corporation*

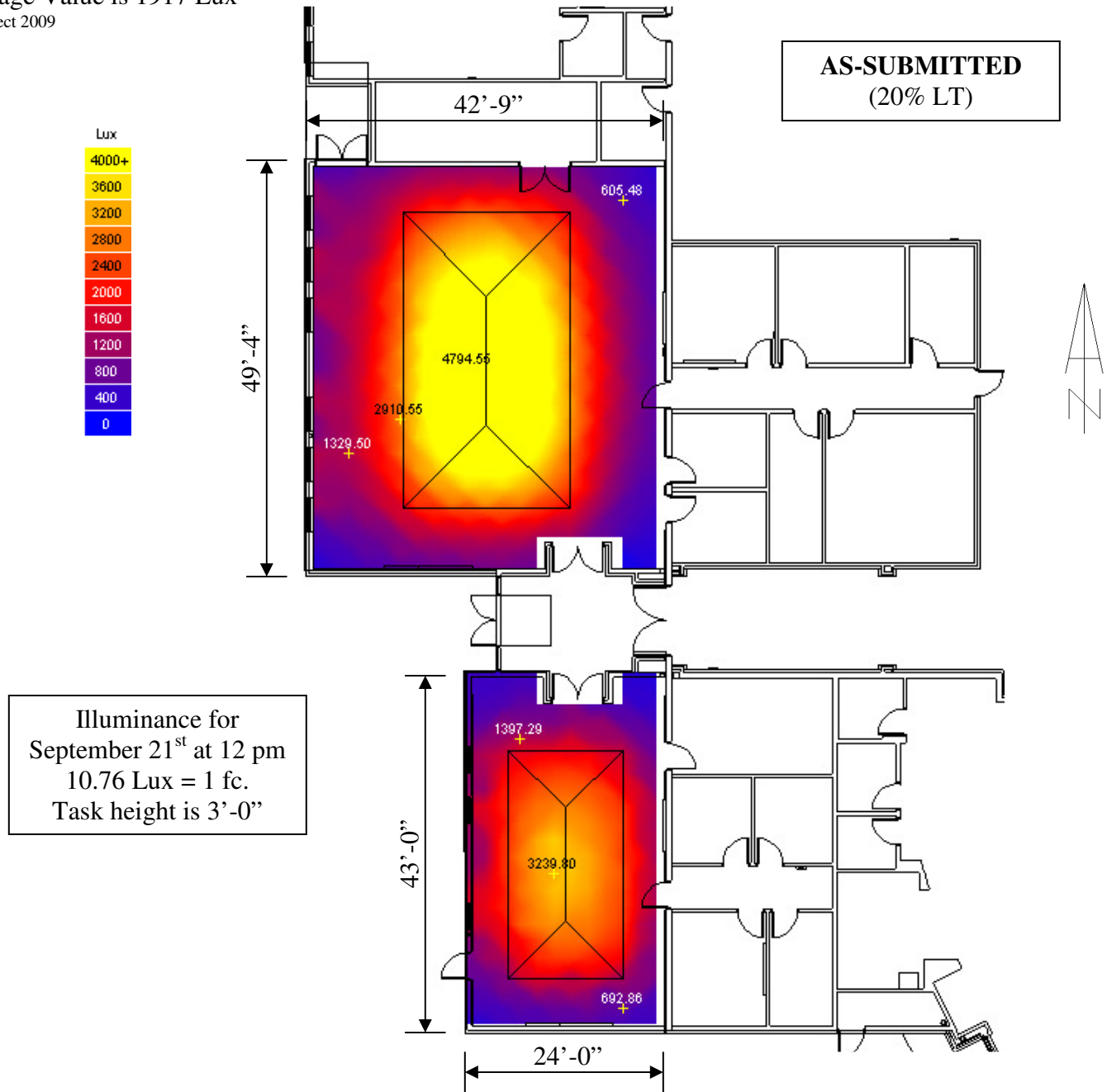
## DAYLIGHT MODEL RESULTS

Project Name:	School	Sky Condition:	Sunny
Project Location:	USA (South)	Weather City Data:	USA (South)
Room Description:	Classrooms	Model Date:	September 21 <sup>st</sup>
Daylight Size:	42'-9" x 49'-4"; 24'-0" x 43'-0"	Model Time:	12:00 PM
Kalwall Application:	Hip-Roof Skylights	Kalwall Transmittance:	20%
Kalwall Size(s):	(1)35'-0"x19'-9"(flat); (1)27'-0"x13'-6"(flat) -both@ 20° pitch	Wall Reflectance:	Neutral
Glass Application:	Windows	Ceiling Reflectance:	White
Glass Sizes(s):	(3) 3'-2" x 4'-8"; (6) 4'-0" x 4'-8"	Floor Reflectance:	Neutral
Glass Transmittance:	40%	Daylight Autonomy:	N/A

Radiance Illuminance for September 21<sup>st</sup> at 12 pm

Average Value is 1917 Lux

© Ecotect 2009

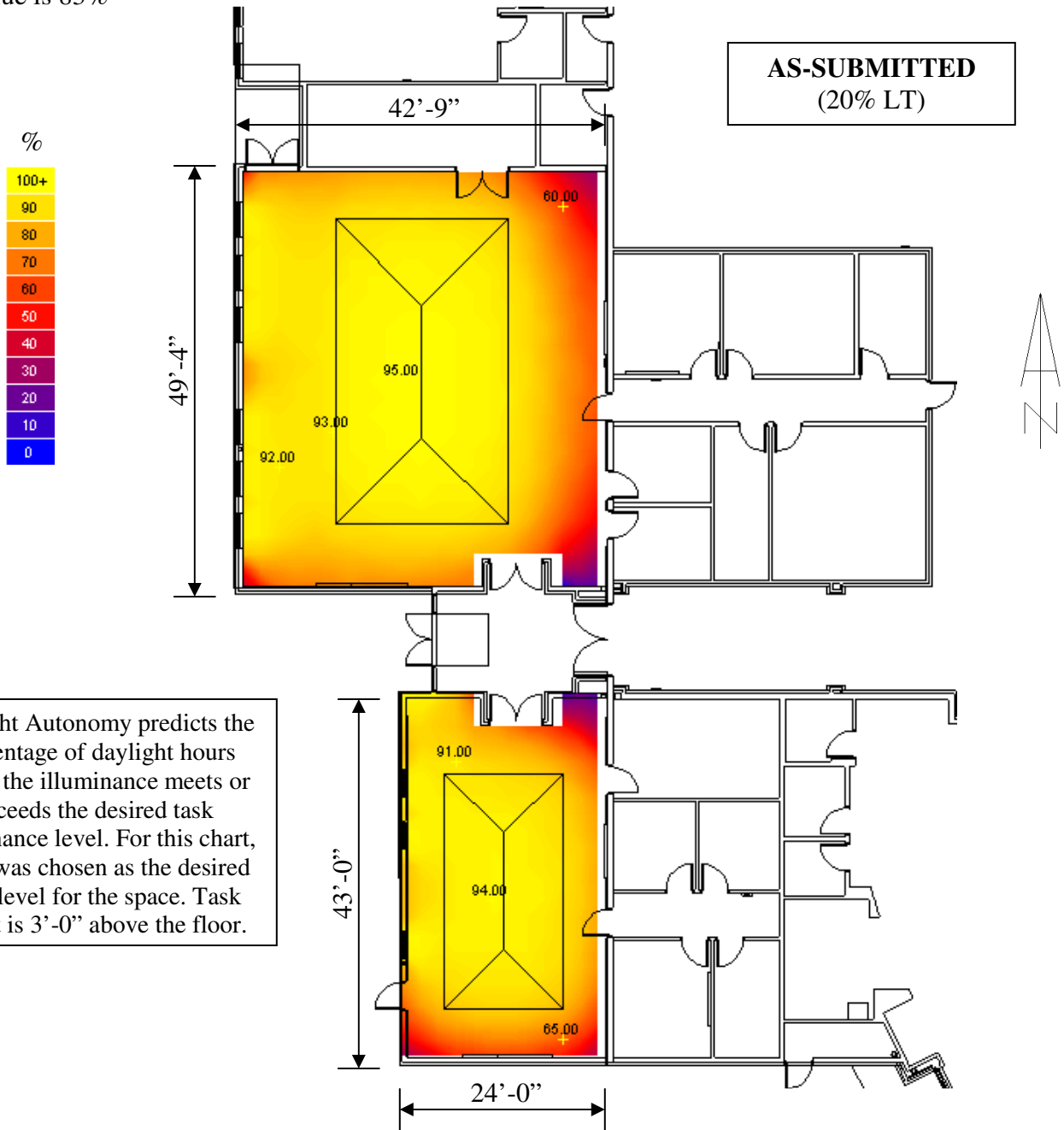


## DAYLIGHT MODEL RESULTS

Project Name:	School	Sky Condition:	Yearly Average
Project Location:	USA (South)	Weather City Data:	USA (South)
Room Description:	Classrooms	Model Date:	Full Year
Daylight Size:	42'-9" x 49'-4"; 24'-0" x 43'-0"	Model Time:	8:00 AM – 3:30 PM
Kalwall Application:	Hip-Roof Skylights	Kalwall Transmittance:	20%
Kalwall Size(s):	(1)35'-0"x19'-9"(flat); (1)27'-0"x13'-6"(flat) –both@ 20° pitch	Wall Reflectance:	Neutral
Glass Application:	Windows	Ceiling Reflectance:	White
Glass Sizes(s):	(3) 3'-2" x 4'-8"; (6) 4'-0" x 4'-8"	Floor Reflectance:	Neutral
Glass Transmittance:	40%	Daylight Autonomy:	30 fc

Daylight Autonomy for 30 fc  
Average Value is 83%

© Ecotect 2009



Daylight Autonomy predicts the percentage of daylight hours where the illuminance meets or exceeds the desired task illuminance level. For this chart, 30 fc was chosen as the desired light level for the space. Task height is 3'-0" above the floor.

# DAYLIGHT MODEL RESULTS

The following interior illuminance renderings are for a clear day at 12 pm on the equinox (Sept. 21<sup>st</sup>)

## ***CLASSROOM*** ***(Looking Southwest)***



## ***FALSE COLOR***

**LUX**

